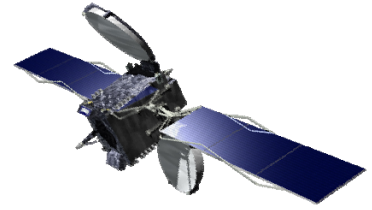


Glowlink® LC100

Earth Terminal Local Equipment Controller



Designed to be flexible and scalable, the LC100 Local Equipment Controller provides flexible, networkable control of earth terminal test and measurement equipment.

Product Overview

The LC100 Local Equipment Controller is a flexible, scalable system designed for monitoring, status and control (M&C) type functions in a satellite ground station. It is designed to operate as either as a stand-alone system, or as a building block for a much larger enterprise management or satellite monitoring system. Based on the Windows PC platform, the LC100 has built-in drivers for common ground station equipment such as swept-frequency spectrum analyzers, antenna controllers, RF switches, signal generators, power meters, downconverters etc.; as well as Glowlink's Model 1000 DSP Satellite Spectrum Monitoring System.

The LC100 serves the dual purpose of controlling equipment for M&C purposes, as well as for performing specific functions such as spectrum measurement, inter-facility link (IFL) calibration, data log and networking capabilities including IP and SNMP.



The LC100 is the building block of Glowlink's New Global Enterprise Management System (GEMS). GEMS is a satellite Enterprise Management System for space-based and ground-based assets. It is scalable to support one to many, simple to sophisticated, ground stations. GEMS employs an intuitive, user-customizable interface that provides Monitor and Control (M&C) to every echelon of site and enterprise management. With GEMS intelligent and action-oriented design, operators are quickly navigated from identification to resolution of equipment issues.

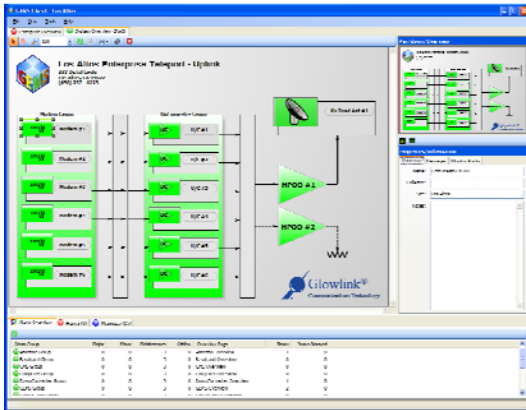
LC100 Local Equipment Controller Product Features

- Provides interface and drivers for a variety of ground station equipment.
- Provides local and remote access using standard networking interfaces.
- Controls swept-frequency spectrum analyzers and performs monitoring functions.
- Controls test and measurement equipment to perform downlink signal path calibration.
- Basic building block for Global Enterprise Management System (GEMS).



GEMS Collector

The LC100 is the GEMS interface, or Collector, for ground station equipment monitoring and control functions. The LC100 can connect to equipment using SNMP or a variety of serial and parallel interfaces including RS-232, RS-485, RS-422, GPIB and Ethernet.



Spectrum Analyzer Control and Measurement

The LC100 can be used to control multiple spectrum analyzers either locally or remotely, and when combined with the Net1000™, can be used to form a carrier monitoring network. It provides the Operator direct control of the spectrum analyzers to perform spectral measurement functions from a

central Network Operations Center via standard LAN/WAN interfaces and easy-to-use graphical user interface (GUI). The user interface has the same look and feel and is compatible with the Glowlink Model 1000 DSP, thus simplifying the integration of the latter into a larger network of monitoring systems, while providing the user a flexible path to upgrade to more powerful, state-of-the-art DSP spectrum analyzers.

IFL Calibration Automation

The LC100 can coordinate various test and measurement equipment to automate the labor-intensive IFL calibration measurements. Using the LC100, IFL calibration measurements are performed automatically. Data are logged and stored, and can be incorporated into carrier power measurements. In addition, as part of a larger spectrum monitoring system, the IFL calibration functions can be seamlessly interleaved amongst other NOC monitoring operations, allowing all these functions to be performed simultaneously without the operator having to interrupt and start individual functions.



LC100 Local Equipment Controller Technical Specifications

Test and Measurement Equipment Interfaces

Graphical User Interface	GEMS, Glowlink Model 1000, and Net1000 compatible
GPIB	IEEE-488.2 compatible
Serial	RS-232 (RS-422 Optional)
USB	USB v2.0
Network	10/100/1000 BaseT Ethernet

Processor Characteristics

Operating System	Windows XP
Processor	Intel Core 2 Duo
Memory	1 GByte
Hard Drive Storage	80 GBytes (minimum)
Interfaces	Ethernet (RJ-45), GPIB, Serial

Physical Characteristics

19-Inch Rackmount	EIA RS-310C Standard 19.0" (W) x 7.0" (H) x 18.0"(D)
Power	110/220VAC \pm 10%, 300W, 47-63 Hz
Weight	35 pounds (typ.)

Optional Features

Expandable GPIB Interfaces
Expandable Serial Interfaces
Redundant, hot swappable power supply
Swappable disk drive
Spectrum Analyzer Control Utility
IFL Calibration Utility



Contact Us

Glowlink Communications Technology, Inc.
333 Distel Circle
Los Altos, California 94022
sales@glowlink.com

Phone: (650) 237-0223

Fax: (650) 237-0225

www.glowlink.com

© 2011, Glowlink Communications Technology, Inc. As it is our intent to continuously improve our products, Glowlink reserves the right to make changes to specifications and features without notice. Glowlink and the Glowlink logo are registered trademarks of Glowlink Communications Technology, Inc. Windows XP is a registered trademark of Microsoft Corporation in the US and/or other countries. Intel and Pentium are registered trademarks of Intel Corporation in the US and/or other countries. All other trademarks are the property of their respective owners.

Glowlink Related Patents

With respect to the Glowlink product(s) described in this document, the following patents may apply:

United States Patent No(s): 8,004,459; 7,667,640; 7,663,547; 7,639,761; 7,466,767; 7,120,392; 6,549,755; New Zealand Patent No(s): 529266; 533787, Singapore Patent No(s): 100422; 105251, Australia Patent No(s): 2002340512; 2003213579, Europe Patent No(s): 1393472, Canada Patent No(s): 2446301, China Patent No(s): ZL02812548.7, Hong Kong Patent No(s): 1066941.

Other U.S. and International Patents Pending



Glowlink Communications Technology, Inc.
Los Altos, California 94022
www.glowlink.com