



Glowlink Model 8000

GEO4

Features Highlight



Glowlink is pleased to announce the **Model 8000 GEO4**, the next-generation product for Interference Detection (ID) and geolocation.

GEO4 is a highly automated geolocation system, delivering significant advancements in geolocation, interference detection and spectrum monitoring with an unprecedented degree of automation and ease-of-use.

As an added value, included in GEO4 are spectrum monitoring and interference detection features of the Glowlink Model 1000 3rd Generation (3G) spectrum monitoring product.

GEO4 Geolocation Features Highlight

G-Wiz™ geolocates interferences in 4 simple steps.

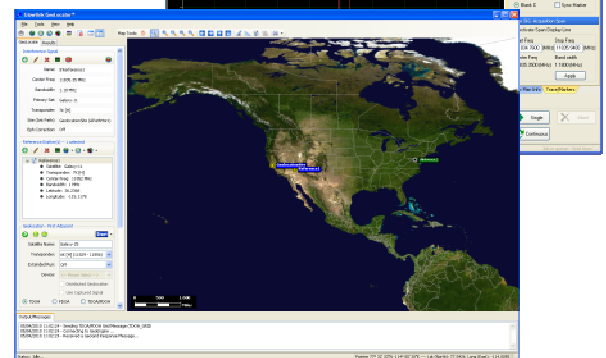
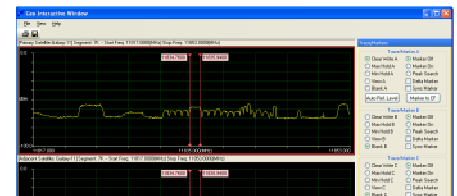
Distributed Geolocation locates interferences using signals acquired from multiple geographical sites.

New and Improved Geolocation Capabilities

- SigCatcher™ captures difficult interference including fast sweeping, hopping, or bursting signals.
- Advanced Ephemeris Correction (AEC™) improves accuracy by compensating for ephemeris errors.
- Patented technology improves location accuracy.

Increased System Usability

- Intuitive, graphical tools streamline system operation.
- Graphical display of satellite uplink footprints.
- TDOA/FDOA contour maps for quick, visual sanity checks of geolocation measurements.
- SmartSat™ facilitates the optimal selection of adjacent satellites.
- Automated transponder frequency offset determination reduces operator workload.
- Compatible with a variety of ephemeris data formats.



GEO4 3G Spectrum Monitoring Features Highlight

Enhanced Monitoring Features

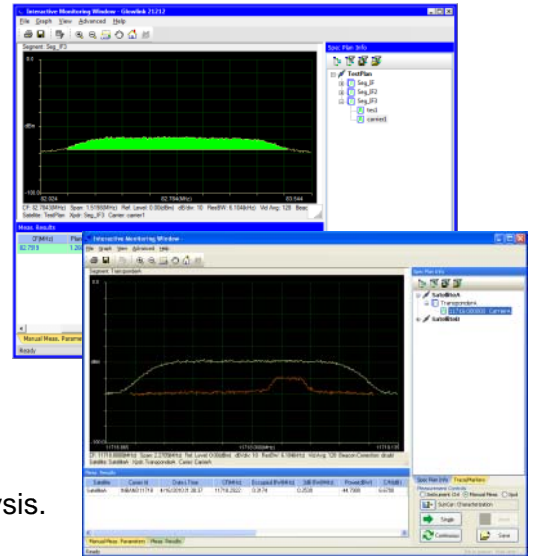
- Resizable interactive spectrum display.
- Enhanced spectrum playback tools.
- Simplified background monitoring operations.

New 3G Monitoring Features

- Customizable display for measurements and alarms.
- Alarms for additional carrier parameters.
- Programmable alarm thresholds for unplanned carriers.
- Save and overlay spectrum for reference purposes.
- Signal recorder for monitored RF carriers.

Extended Performance and Measurement Features


- SunCar™ and SunCar™ Classic for advanced interference analysis.
- Paired-carrier monitoring for overlapped carriers.
- 4x Speed improvement for faster signal characterization.



Availability

GEO4 standard features will be provided free of charge to subscribers of Glowlink Software Maintenance Plan or Total System Enhanced Maintenance (TSEM™) Plan starting in May 2010. Subscribers to the Model 8000 Total System Enhanced Maintenance (TSEM™) plan are additionally eligible for Glowlink on-line upgrade assistance.

We highly recommend upgrading to GEO4 in order to take full advantage of the ID and geolocation capabilities it offers. Doing so will also prevent upgrade “gaps” and ensure system readiness for future upgrades.

For more product information see:  [Model 8000 Datasheet](#)

To learn more about the Model 8000 maintenance plans, call (650) 237-0223 or email sales@glowlink.com

© 2011, Glowlink Communications Technology, Inc. As it is our intent to continuously improve our products, Glowlink reserves the right to make changes to specifications and features without notice. Glowlink and the Glowlink logo are registered trademarks of Glowlink Communications Technology, Inc. Windows XP is a registered trademark of Microsoft Corporation in the US and/or other countries. Intel and Pentium are registered trademarks of Intel Corporation in the US and/or other countries. All other trademarks are the property of their respective owners.

Glowlink Related Patents

With respect to the Glowlink product(s) described in this document, the following patents may apply:

United States Patent No(s): 8,004,459; 7,667,640; 7,663,547; 7,639,761; 7,466,767; 7,120,392; 6,549,755, New Zealand Patent No(s): 529266; 533787, Singapore Patent No(s): 100422; 105251, Australia Patent No(s): 2002340512; 2003213579, Europe Patent No(s): 1393472, Canada Patent No(s): 2446301, China Patent No(s): ZL2812548.7, Hong Kong Patent No(s): 1066941.

Other U.S. and International Patents Pending