

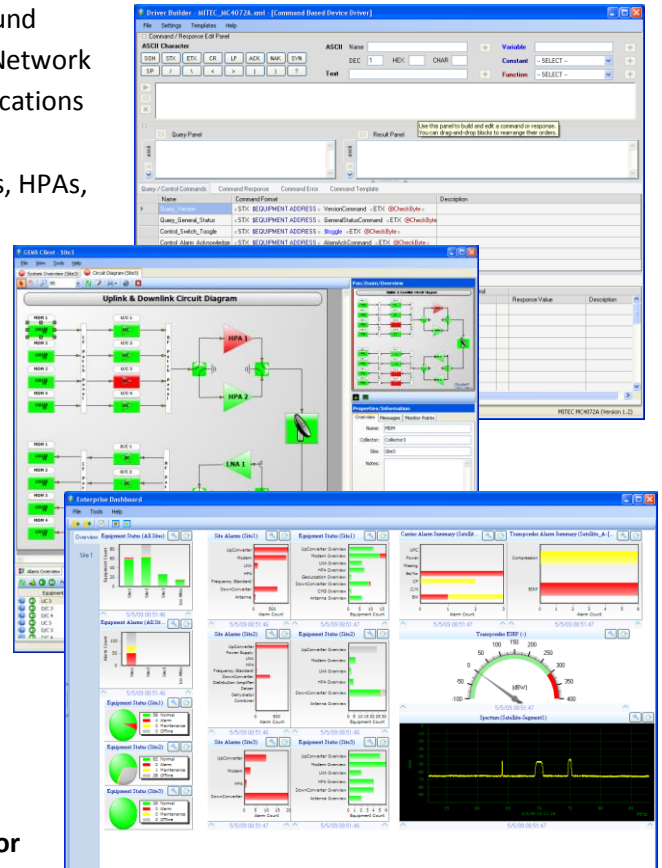
# Global Enterprise Management System (GEMS®) --Product Synopsis



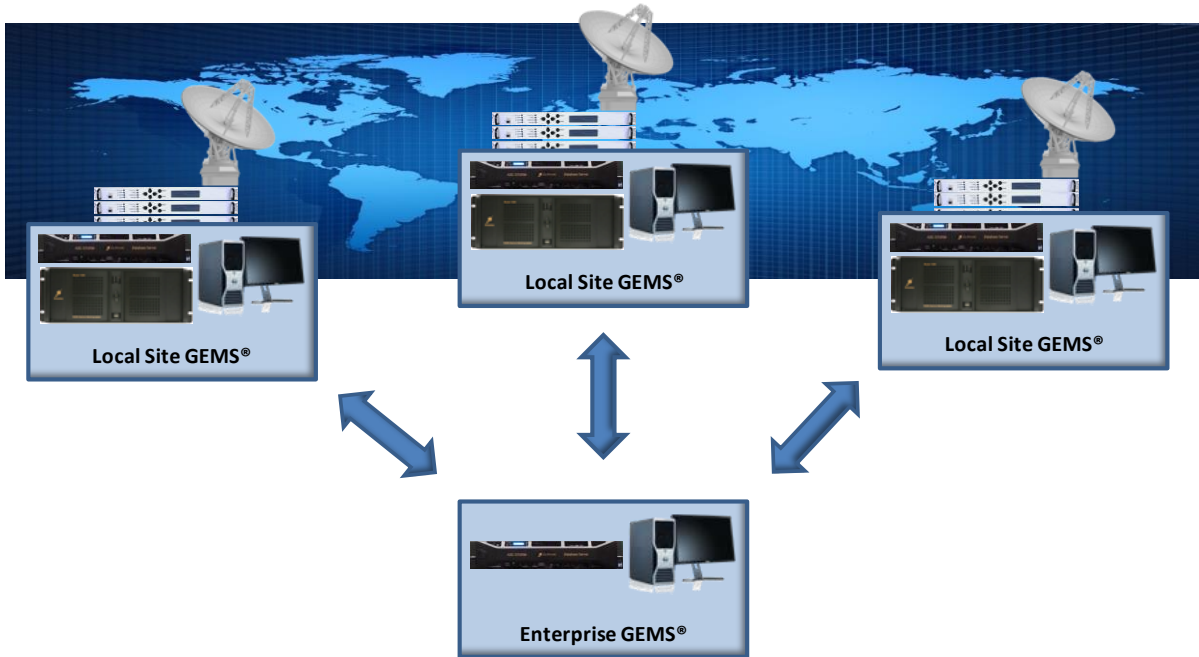
GEMS® by Glowlink is a state-of-the-art satellite ground infrastructure monitor and control (M&C) system. Network Managers can use GEMS® to manage their communications and site facilities equipment including standard communications gear (modems, upconverters, ACUs, HPAs, etc.) and facilities-related systems such as HVAC and intrusion detection systems.

GEMS® interfaces to a variety of physical standards including TCP/IP, serial, GPIB, and contact closure. Its point-click, user-customizable interface allows Network Managers to tailor GEMS® look-and-feel for their specific monitor and control needs.

GEMS® delivers enhanced operational awareness and equipment control with an overall low cost of ownership. Its Driver Builder feature gives the Network Manager the tools to synthesize new equipment drivers in minutes, and directly import SNMP-based drivers using mouse clicks – with no programming experience needed and no costly maintenance fees. **This means the Network Operator is no longer held captive and forced to pay for individual device drivers, unlike with other M&C products on the market.**



GEMS® is comprised of three main building blocks: (1) a **GEMS® Controller**, installed at a local site and serving as the interface to ground infrastructure and equipment at the site; (2) a **Local/Enterprise GEMS® Server**, installed at a local site and/or central location; and (3) an integrated **GEMS® Workstation**, installed at a local/central location providing the user operations interface. GEMS® can be operated at a single facility – or as illustrated in the following figure, scaled to provide enterprise management across multiple facilities.



## GEMS<sup>®</sup> PRODUCT FEATURES

- Synthesize equipment drivers using simple point-click operations (Driver Builder)
- Analyze multiple alarms to isolate the root cause (Alarm Correlator)
- Schedules events for easy equipment management (Scheduler)
- Intuitive, object-based interface for maximum ease-of-use
- Seamlessly integrate with Glowlink monitoring & geolocation products
- Scalable, plug-and-play building-block design

### For Additional Information Contact:

Tel: +1 (650) 237-0220

Email: [sales@glowlink.com](mailto:sales@glowlink.com)

Website: [www.glowlink.com](http://www.glowlink.com)

### About Glowlink Communications Technology, Inc.

Based in the Silicon Valley, United States, Glowlink Communications Technology, Inc. provides equipment and services that improve the performance of broadband communications, both satellite and non-satellite based. It is a recognized industry leader of innovative solutions for broadband communications, carrier spectrum monitoring, interference detection/mitigation, geolocation, network management and other applications. Contact the company at [sales@glowlink.com](mailto:sales@glowlink.com) for additional product and purchase information.